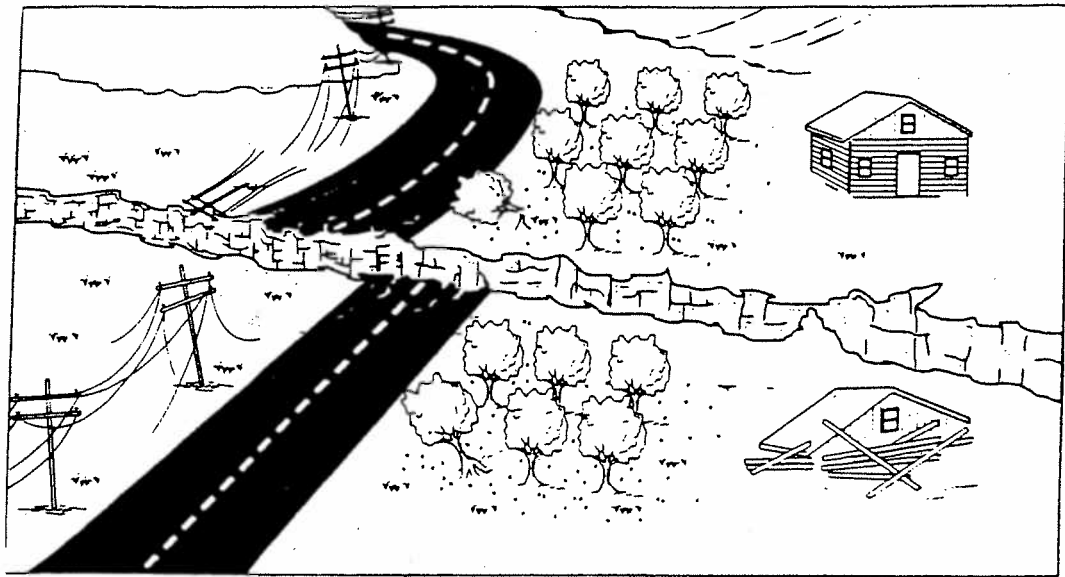


## OBSERVING AND INFERRING

Use the illustration to answer the questions that follow. Write your answers in the space provided or a separate sheet of paper.



1. Make and record at least three qualitative observations of the scene in the illustration.

---

---

2. Explain how you could make at least three quantitative observations if you were able to visit this scene.

---

---

3. "The house collapsed at the same time that the poles fell down." Is this statement an observation or an inference? \_\_\_\_\_

Explain your answer

---

---

# Making Inferences



Read the following observations. Then make inferences that explain each observation. Remember, there may be more than one logical explanation.

**Observation 1:** You observe that the sky at noon is darkening.

Your inference: \_\_\_\_\_

**Observation 2:** The principal interrupts class and calls a student from the room.

Your inference: \_\_\_\_\_

**Observation 3:** All middle school students are bringing lunch from home.

Your inference: \_\_\_\_\_

**Observation 4:** A former rock-and-roll band member has poor hearing.

Your inference: \_\_\_\_\_

**Observation 5:** You leave a movie theater and see that the street is wet.

Your inference: \_\_\_\_\_

**Observation 6:** During a handshake, you feel that the palm of the individual's hand is rough and hard.

Your inference: \_\_\_\_\_

**Observation 7:** The classroom lights are off.

Your inference: \_\_\_\_\_

**Observation 8:** A siren is heard going past the school.

Your inference: \_\_\_\_\_